

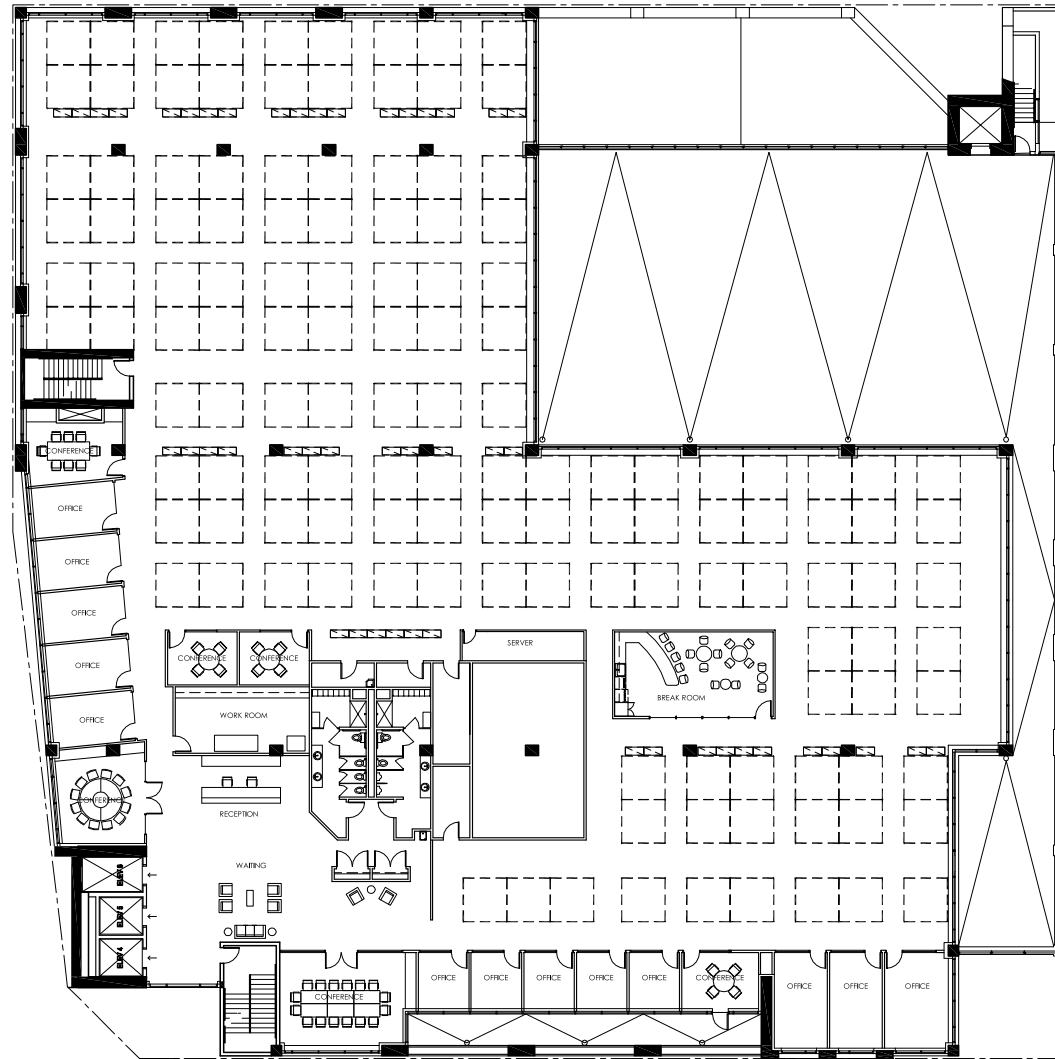


# THE LOVEJOY

space to create

THE LOVEJOY work spaces fill floors 7 – 9 on the westernmost block. Each floor has a multi-tenant or single tenant option with room for private offices and open space. Parking is available for tenants that require it.

- Large elevated garden terrace on Level 7
- 15' exposed concrete ceilings
- Tall windows for ample natural daylight
- Bicycle parking
- Showers on Levels 7 - 9



SINGLE  
TENANT



1 SW Columbia Street  
Suite 450  
Portland, OR 97258  
Fax: 503.972.8001  
www.pacific-re.com

**Contact:**  
Buzz Ellis, SIOR  
503.972.8091  
buzz.ellis@pacific-re.com

Mark Friel  
503.972.8094  
mark.friel@pacific-re.com

Ben McInnis  
503.972.8093  
ben.mcinnis@pacific-re.com

