

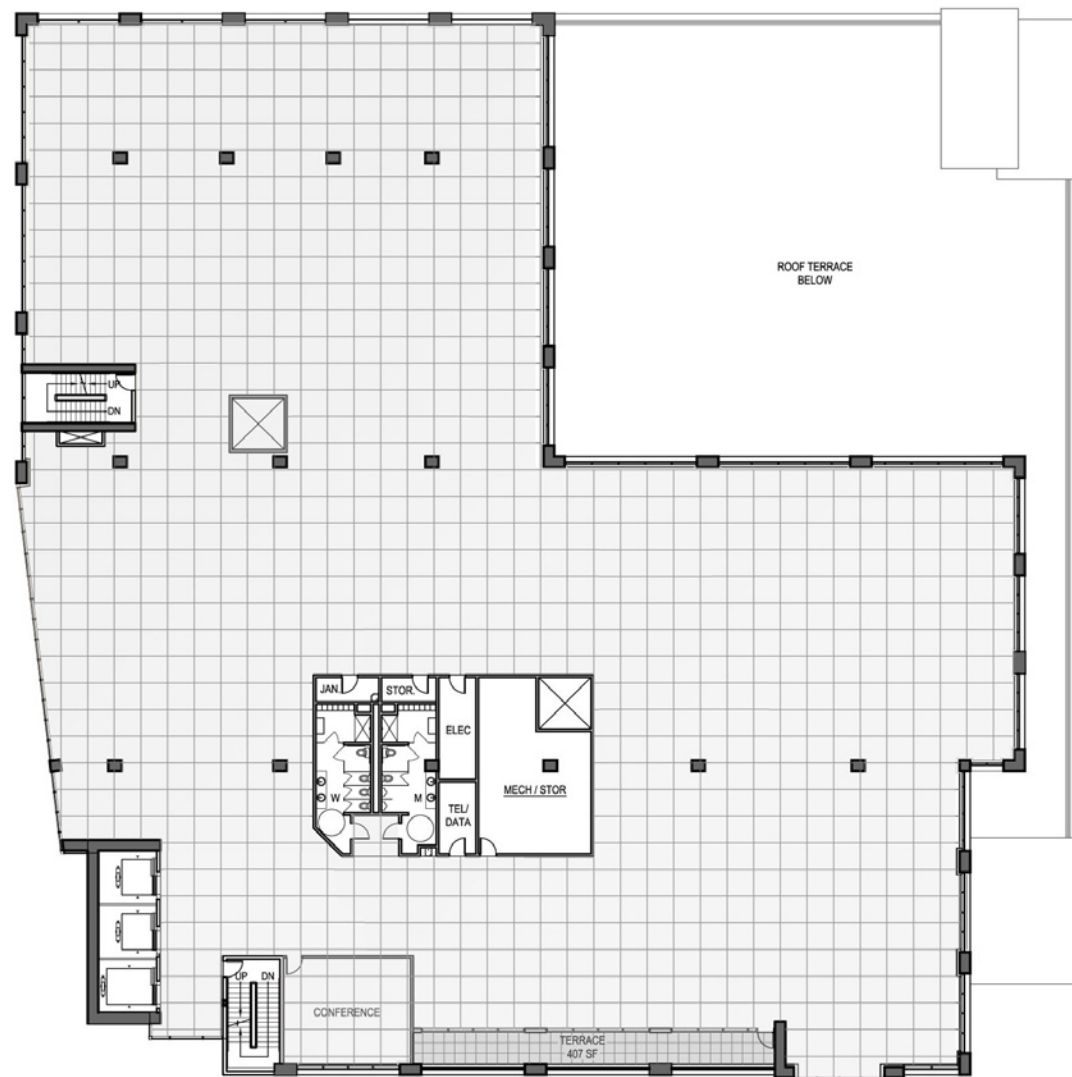


THE LOVEJOY

space to create

THE LOVEJOY work spaces fill floors 7 – 9 on the westernmost block. Each floor has a multi-tenant or single tenant option with room for private offices and open space. Parking is available for tenants that require it.

- Excellent daylight
- Overlooks large garden terrace on Level 7
- Additional garden terrace on south side of Level 9
- 2/1,000 parking ratio



LEVEL

9

PACIFIC
REAL ESTATE PARTNERS, INC

1 SW Columbia Street
Suite 450
Portland, OR 97258
Fax: 503.972.8001
www.pacific-re.com

Contact:

Buzz Ellis, SIOR
503.972.8091
buzz.ellis@pacific-re.com

Mark Friel
503.972.8094
mark.friel@pacific-re.com

Ben McInnis
503.972.8093
ben.mcinnis@pacific-re.com


UNICO™